

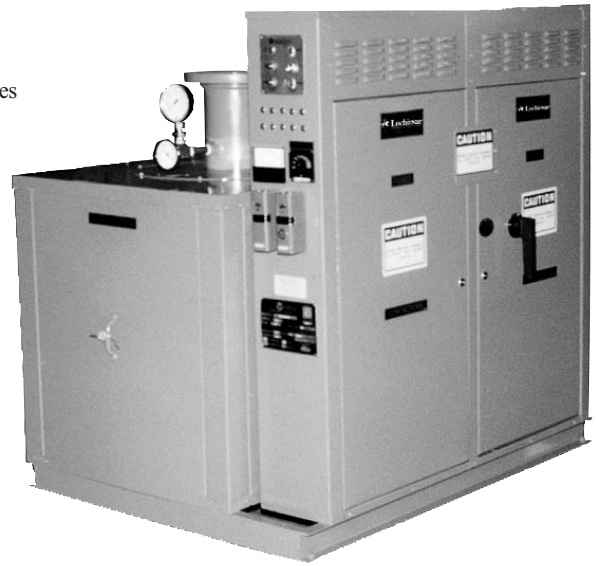
Commercial Electric Hot Water Boilers

Standard Features

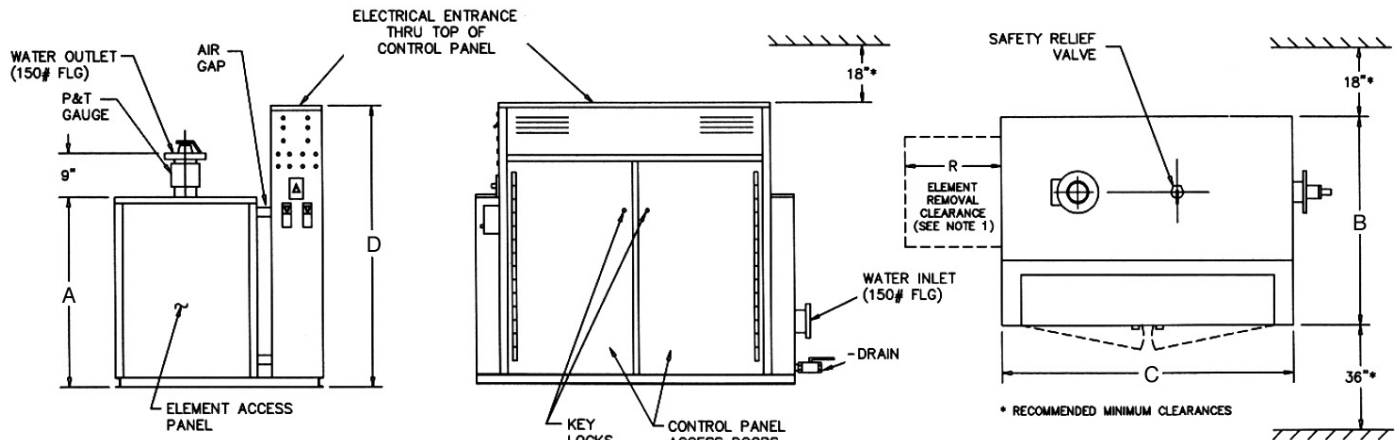
- ASME National Board Registered Pressure Vessel
- Heavy Duty Steel Boiler Vessel Housing
- 3" Fiberglass Insulation
- Flanged Inlet and Outlet Connection (above 3")
- ASME Pressure Relief Valve
- Pressure Gauge with Cock
- Drain Valve
- Low Water Cut-Off with Manual Reset
- Adjustable High Limit with Automatic Reset
- Adjustable High Limit with Manual Reset
- Incoloy Sheathed Elements
- Internal Branch Circuit Fusing
- Magnetic Contactors
- Main Supply Circuit Lugs
- 120 Volt Fused Control Transformer
- On/Off Switch with Pilot Light
- Preheat Switch with Pilot Light (above 240 kW)
- Key Locked Door
- On/Off Temperature Switches (1 & 2 Step Models)
- Electronic Multi-Stage Control (3 & 4 Step Models)
- Proportional Solid State Step Control
- (Units with more than 4 Steps)
- Status Pilot Light for each Step
- Digital Temperature Readout (Except 1 & 2 Step)
- Listed by the Underwriters Laboratories

Optional Equipment

- Alarm Bell
- Automatic Breaker
- Flow Switch
- Fused Disconnect
- Ground Fault Detector
- Low Temperature Switch
- Main Power Disconnect
- Manual Limit Toggle Switches (1 per step)
- Kilowatt/Hour Meter



Commercial Electric Hot Water Boiler Dimensions & Specifications



Note 1: Element removal clearance (R) is equal to 2 times the element kW.

Model Number	Max Input kW	MBH Per Hour	Max # of Elements	Connection Sizes (NPT)		Max. Flow GPM	Tank Dims (In)	Data Vol (Gal)	Dimensions (Inches)				Weight (lbs.)	
				In/Out	Drain				A	B	C	D	Ship	Oper.
BW*20	320	1092	16	4" FLG	1"	300	20x42	40	30"	36"	50"	51"	1000	1320
BW*20	520	1774	26	4" FLG	1-1/4"	300	20x42	40	30"	36"	54"	51"	1050	1370
BW*24	600	2047	30	4" FLG	1-1/4"	470	24x44	70	34"	40"	52"	51"	1300	1860
BW*24	920	3139	46	6" FLG	1-1/2"	680	24x44	70	34"	40"	56"	63"	1500	2060
BW*30	1560	5323	78	6" FLG	1-1/2"	900	30x48	125	40"	50"	60"	75"	1900	2900
BW*36	2000	6824	100	8" FLG	2"	1170	36x48	165	46"	56"	62"	87"	2400	3720
BW*42	3000	10236	150	10" FLG	2"	1840	42x50	260	54"	76"	64"	77"	3600	5760
BW*48	3600	12283	180	10" FLG	2"	1840	48x52	340	60"	82"	66"	89"	4600	7420

Commercial Electric Hot Water Boilers

208 & 240 Volt Ratings

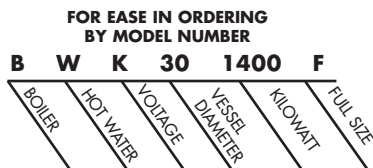
Model Number	Rating MBH	Rating kW	Elements Qty	Elements kW	Number of Cir.	Number of Steps@ kW	Amps (208/3)
BW*24-435F	1484	435	29	15	29	6@60,1@45,1@30	1210
BW*24-450F	1535	450	30	15	30	7@60,1@30	1251
BW*24-465F	1587	465	31	15	31	7@60,1@45	1293
BW*24-480F	1638	480	32	15	32	8@60	1334
BW*24-495F	1655	495	33	15	33	6@60,1@45,3@30	1376
BW*24-510F	1740	510	34	15	34	7@60,3@30	1418
BW*24-525F	1791	525	35	15	35	7@60,8@60,2@30	1459
BW*24-540F	1842	540	36	15	36	8@60,2@30	1501
BW*24-555F	1894	555	37	15	37	8@60,1@45,1@30	1543
BW*24-570F	1945	570	38	15	38	9@60,1@30	1584
BW*24-585F	1996	585	39	15	39	9@60,1@45	1626
BW*24-600F	2047	600	40	15	40	10@60	1668

Notes: For lower KW ratings, please refer to the Compact Boiler.

* Indicates Voltage

VOLTAGE SCHEDULE

A - 240V	1PH
B - 240V	3PH
J - 208V	1PH
K - 208V	3PH
X - 480V	3PH
W - 277V	1PH
Y - 380V	3PH
Z - 415V	3PH



This is a 208 volt, three phase, 1400 Kilowatt full size electric hot water boiler with 30 inch diameter vessel.

Operating temperature and pressure are requested prior to placing an order.

480 Volt Ratings

Model Number	Rating MBH	Rating kW	Elements Qty	Elements kW	Number of Circuits	Number of Steps@ kW	Amps (480/3)
BWX20-480F	1638	480	24	20	12	4@80.4@40	578
BWX20-520F	1774	520	26	20	13	5@80.3@40	626
BWX24-560F	1911	560	28	20	14	6@80.2@40	674
BWX24-600F	2047	600	30	20	15	7@80.1@40	722
BWX24-640F	2184	640	32	20	16	8@80	770
BWX24-680F	2320	680	34	20	17	7@80.3@40	818
BWX24-720F	2457	720	36	20	18	8@80.2@40	867
BWX24-760F	2593	760	38	20	19	9@80.1@40	915
BWX24-800F	2730	800	40	20	20	10@80	963
BWX24-840F	2866	840	42	20	21	9@80.3@40	1011
BWX24-880F	3003	880	44	20	22	10@80.2@40	1059
BWX24-920F	3139	920	46	20	23	11@80.1@40	1107
BWX30-960F	3276	960	48	20	24	12@80	1156
BWX30-1000F	3412	1000	50	20	25	1@120.11@80	1204
BWX30-1040F	3548	1040	52	20	26	2@120.10@80	1252
BWX30-1080F	3685	1080	54	20	27	3@120.9@80	1300
BWX30-1120F	3821	1120	56	20	28	4@120.8@80	1348
BWX30-1160F	3958	1160	58	20	29	5@120.7@80	1396
BWX30-1200F	4094	1200	60	20	30	6@120.6@80	1444
BWX30-1240F	4231	1240	62	20	31	7@120.5@80	1493
BWX30-1280F	4367	1280	64	20	32	8@120.4@80	1541
BWX30-1320F	4504	1320	66	20	33	9@120.3@80	1589
BWX30-1360F	4640	1360	68	20	34	10@120.2@80	1637
BWX30-1400F	4777	1400	70	20	35	11@120.1@80	1685
BWX30-1440F	4913	1440	72	20	36	12@120	1733
BWX30-1480F	5050	1480	74	20	37	9@120.5@80	1781
BWX30-1520F	5186	1520	76	20	38	10@120.4@80	1829
BWX30-1560F	5323	1560	78	20	39	11@120.3@80	1877
BWX36-1600F	5459	1600	80	20	40	12@120.2@80	1926
BWX36-1680F	5732	1680	84	20	42	14@120	2022
BWX36-1760F	6005	1760	88	20	44	12@120.4@80	2119
BWX36-1840F	6278	1840	92	20	46	14@120.2@80	2215
BWX36-1920F	6551	1920	96	20	48	16@120	2311
BWX36-2000F	6824	2000	100	20	50	14@120.4@80	2407
BWX42-2080F	7097	2080	104	20	52	16@120.2@80	2503
BWX42-2160F	7370	2160	108	20	54	18@120	2600
BWX42-2240F	7643	2240	112	20	56	16@120.4@80	2696
BWX42-2320F	7916	2320	116	20	58	18@120.2@80	2792
BWX42-2400F	8189	2400	120	20	60	20@120	2888
BWX42-2480F	8462	2480	124	20	62	18@120.4@80	2985
BWX42-2560F	8735	2560	128	20	64	20@120.2@80	3081
BWX42-2640F	9008	2640	132	20	66	22@120	3177
BWX42-2720F	9281	2720	136	20	68	20@120.4@80	3273
BWX42-2800F	9554	2800	140	20	70	22@120.2@80	3369
BWX42-2880F	9827	2880	144	20	72	24@120	3466
BWX42-2960F	10100	2960	148	20	74	2@160.22@120	3562
BWX42-3040F	10372	3040	152	20	76	4@160.20@120	3658
BWX48-3120F	10645	3120	156	20	78	6@160.18@120	3755
BWX48-3200F	10918	3200	160	20	80	8@160.16@120	3851
BWX48-3280F	11191	3280	164	20	82	10@160.14@120	3947
BWX48-3360F	11464	3360	168	20	84	12@160.12@120	4044
BWX48-3440F	11737	3440	172	20	86	14@160.10@120	4140
BWX48-3520F	12010	3520	176	20	88	16@160.8@120	4236
BWX48-3600F	12283	3600	180	20	90	18@160.6@120	4332

Notes: For lower KW ratings, please refer to the Compact Boiler.

Models above 1600KW are also available in 40KW increments.



Lochinvar[®]
High Efficiency Water Heaters, Boilers and Pool Heaters

Lochinvar Corporation • 300 Maddox Simpson Pkwy • Lebanon, TN 37090 • 615-889-8900 / Fax: 615-547-1000

www.Lochinvar.com